



The Faculty of Medicine at Charles University in Pilsen UniMeC Campus

ABOUT THIS PROJECT:

Market Segment:
General Construction

Location:
Pilsen, Czech Republic

Products Used:
Xypex Admix 1000 NF

Owner:
Charles University

Contractor:
GEMO a.s.

Project Designer:
VPÚ DECO PRAHA

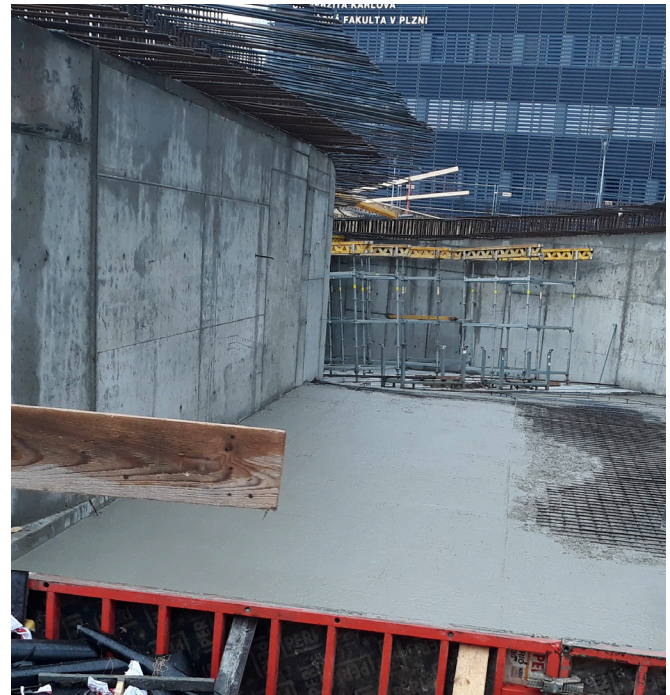


For over seventy years, the Faculty of Medicine at Charles University in Pilsen, Czech Republic was housed in a historical building not designed for educational purposes. To meet the evolving needs of modern teaching and research, Charles University initiated the construction of a new university medical center (UniMeC campus) adjacent to the University Hospital Pilsen in Lochotín, Czech Republic.

A critical component of the construction was ensuring the water tightness of the foundation slabs and walls below ground level.

Xypex Admix C-1000 NF was selected and used for its unparalleled advantages, such as being added to the concrete during batching, eliminating the need for post-curing waterproofing membranes or coatings. The use of Xypex Admix saves time and money, renders the concrete impermeable to water, and chemically resistant. This ensures long-term durability and protection for the campus's concrete infrastructure.

The construction of this project began in September 2019 and reached completion in July 2022. It cost CZK 440 million (about USD 18.7 million) and used 8,000 kg of Xypex Admix C-1000 NF.



This project centralized nine learning institutes and essential support facilities, including a Scientific Information Center, Information Technology Center, Operations and Technical Department, and the Dean's Office into the main campus building. A canteen, cafeteria, and a new sports hall for the Department of Physical Education were also established.

With the main building, sports hall, and supporting infrastructure fully operational, the Faculty of Medicine in Pilsen enjoys a centralized location in two adjacent buildings, maintaining proximity to clinical departments on the University Hospital Pilsen - Lochotín campus. This proximity has significantly enhanced the interaction between the campus and these clinical departments.

Completing the UniMeC campus was a significant milestone for the Faculty of Medicine at Charles University in Pilsen, showcasing a commitment to providing state-of-the-art educational and research facilities.

